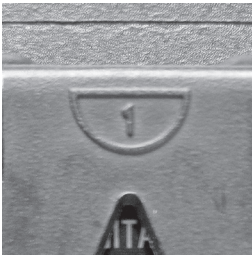
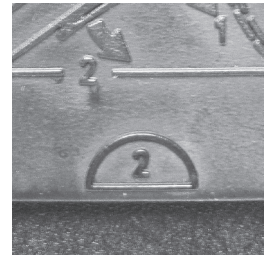


# Digital Catalytic Monitor

## Model 9-86 Operating Instructions

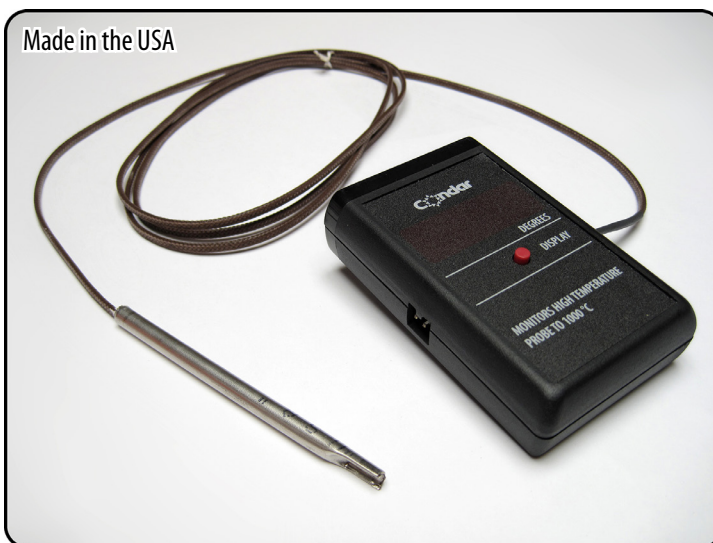


The display unit may be hung on the wall, or stand on a horizontal surface. The built-in stand on the rear of the display unit may be opened to provide an easel-type support. To open, do not use force. **Lift up the center locking tab** (the #1 molded into the top of monitor clip) **while opening the clip** (the #2 molded into the bottom of the monitor clip).



**Detailed photographic set up instructions on page 4.**

**NOTE: 9 VOLT ALKALINE BATTERY IS NOT INCLUDED.** (An optional 120V AC / 9V DC Adapter for use with standard household current is available from Condar.)



**IMPORTANT:** The steel probe tube is rated to 1950F. At this temperature the stainless steel probe tip will begin to glow and lose its properties, becoming brittle. To order a replacement probe visit:

[www.Condar.com/digital\\_monitor\\_woodstoves.html](http://www.Condar.com/digital_monitor_woodstoves.html)

### REPLACEMENT PARTS

The Condar Catalytic Monitor is a precision-engineered, dependable device. Should you need replacement parts, order as follows:

Cable/Probe: 9-8601  
Digital Display: 9-8602 (Fahrenheit) or 9-8602C (Celsius)  
AC/DC Adapter: 9-86AC/DC



Condar Company  
108 Mill Spring Road  
PO Box 250  
Columbus, North Carolina  
28722-0250

**Condar.com**

phone: (828) 894-8383 ext. 223  
fax: (828) 894-2718

## PLACING THE DISPLAY UNIT

Locate the display unit well away from the heat of the stove. Stove heat could melt the plastic case.

The display unit may be hung on a wall, or stand on a horizontal surface. The built in stand on the rear of the display unit may be opened to provide an easel-type support. To open, do not use force.

**Lift up the center locking Tab 1 while opening Tab 2 on the Stand.**

**1.** Individual stove manufacturers' designs and specifications vary. Use these instructions as a general guide. Consult the owner's manual for specific recommendations.

Many stoves come with a pre-drilled hole for the probe. Often the hole will be plugged with a button or screw. If such a hole is not pre-drilled at the factory, consult your stove dealer or manufacturer as to proper placement of a catalytic thermometer. It may be necessary to drill your own  $\frac{1}{4}$  inch (6.5 mm) hole. Insert probe according to the instructions included with your stove.

Locate the tip of probe just behind the catalytic combustor (toward the chimney)  $\frac{1}{2}$  inch (12 mm) away from the combustor. Be careful to avoid having tip touching combustor.

**2.** Install a fresh 9-volt alkaline battery in the battery compartment located on the back of the display unit. Or, connect optional AC adapter securely inside compartment.

**3.** Plug cable into display unit.

There are two identical connector ports located on the sides of the display unit. Plug cable into the more convenient port. The connectors are mechanically polarized so that they cannot be connected incorrectly.

**4.** Push and release display button.

The unit is now powered up for approximately 5 minutes. During this time, display will stay lighted, with temperature reading "COOL".

**5.** While your woodstove is heating up, the display will continue to read "COOL".

**Caution: Avoid sharp bending of the cable within 6 inches of the white cable connector or steel probe.**

**6.** When the temperature at the probe reaches 350°F (175°C ) the display will show actual temperature reading, changing by 50°F (25°C ) increments.

**7.** When the temperature at the probe drops below 350°F (175°C ), the display reading returns to "COOL".

## OPERATING YOUR WOODSTOVE

Note: In some stoves the catalytic probe port location is such that the probe cannot read temperatures when the damper is in the bypass position. In these stoves it may be necessary to engage the combustor at a lower temperature. Engage combustor by shutting the stove's bypass damper. Watch for two to five minutes to be sure that the combustor has been activated.

When properly activated, the temperature will steadily rise from **500°F (250°C)** up to between **700°F (375°C)** and **1500°F (800°C)**, depending on the design of your stove. When the catalytic reaction has been observed, reduce your draft to the desired level for the heat output you want. If the temperature drops or fails to climb when you engage the combustor, open the bypass damper and continue to fire the stove on high until you have reached at least **500°F (250°C)**, then try again to engage the combustor. Repeat the activation procedure any time you add a large load of fuel or when refueling at temperatures less than **350°F (175°C)**. *Note: With a Condar SteelCat combustor, you may engage the combustor at approximately 400°F (200°C).* **Do not operate the stove at temperatures over 1500°F (800°C) for prolonged periods.** There are no warranties which extend beyond the written warranty herein. Condar Company disclaims any implied warranty of merchantability or implied warranties of fitness for a particular purpose.

## COMBUSTOR MAINTENANCE AND REPLACEMENT

For helpful tips on cleaning and maintaining your catalytic combustor, visit:  
[WoodstoveCombustors.com/maintenance.html](http://WoodstoveCombustors.com/maintenance.html)

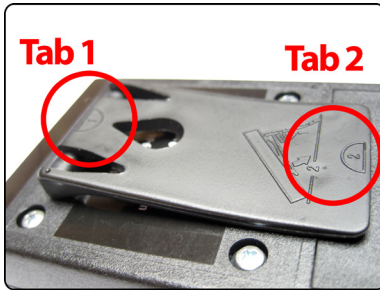
To learn when to replace your catalytic combustor, visit:  
[WoodstoveCombustors.com/replacement.html](http://WoodstoveCombustors.com/replacement.html)

# Digital Catalytic Monitor

## Set-Up

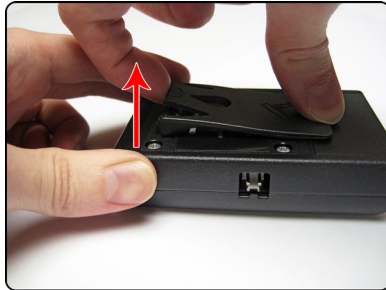
(For Fahrenheit and Celsius Models)

### Step 1



Look at backside tab. See (1) and (2).

### Step 2



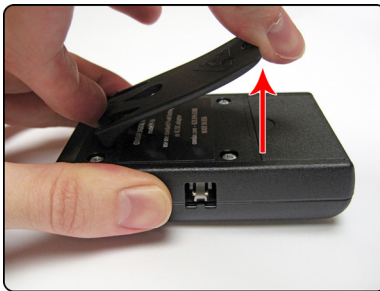
Lift top of tab at the (1).



Plug hole has 2 notches on one side.

### Step 6

### Step 3

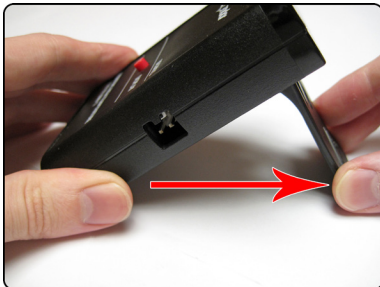


Lift bottom of tab at the (2).



Make sure the probe cable matches!

### Step 4



Swing bottom of tab out.



Plug in probe on either left side...

### Step 7

### Step 5



Stand your Meter up on its own.



... or the right side!