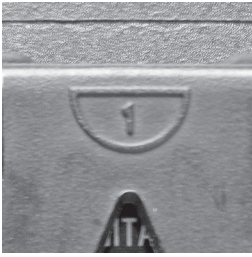


# Celsius Digital Pyrometer

## Model 9-88C Operating Instructions

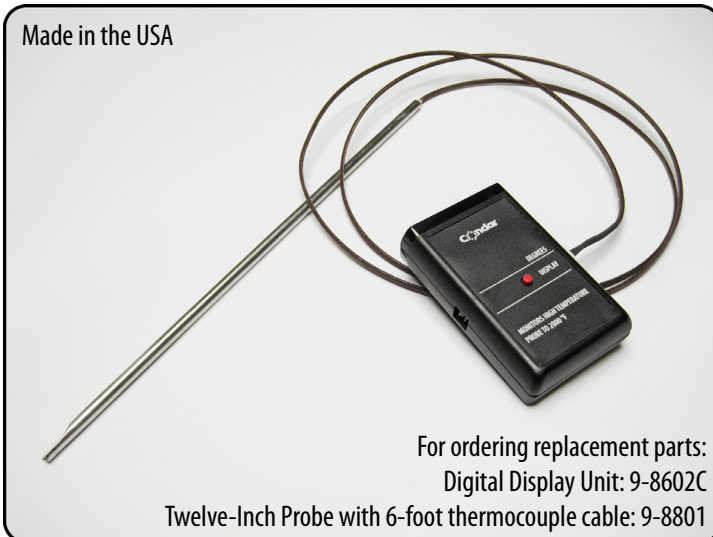


The display unit may be hung on the wall, or stand on a horizontal surface. The built-in stand on the rear of the display unit may be opened to provide an easel-type support. To open, do not use force. **Lift up the center locking tab** (the #1 molded into the top of monitor clip) **while opening the clip** (the #2 molded into the bottom of the monitor clip).



**Scroll down to the next page for photographic set up instructions.**

- 1 Locate the display unit well away from the heat source as high temperatures could melt the plastic case.
- 2 Install a 9-volt alkaline battery in the battery compartment located on the back of the display OR connect the optional AC adaptor.
- 3 Plug cable into either side of the display unit. Avoid sharp bending of the cable within 6 inches of the white cable connector or steel probe.
- 4 Push and release display button. The unit is now powered up for approximately 5 minutes. During this time the display will read COOL or until the temperature reaches 100C.
- 5 When the temperature at the probe drops below 100C, the display reads COOL. The display changes by 25 degree increments.



**IMPORTANT:** The steel probe tube is rated to 1050C. At this temperature the stainless steel probe tip will begin to glow and lose its properties, becoming brittle. To order a replacement probe visit:

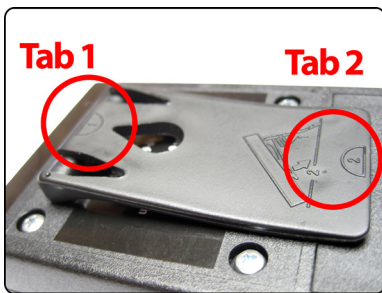
[www.Condar.com/kiln\\_thermometers\\_homegarden.html](http://www.Condar.com/kiln_thermometers_homegarden.html)



# Digital Pyrometer Set-Up

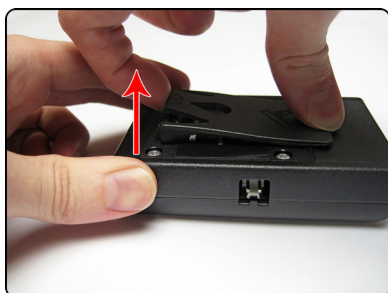
(For Fahrenheit and Celsius Models)

**Step 1**



Look at backside tab. See (1) and (2).

**Step 2**



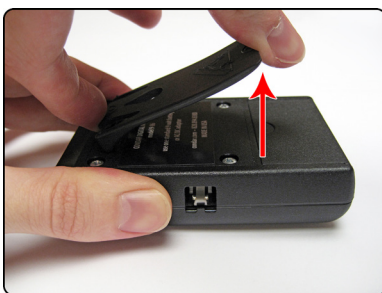
Lift top of tab at the (1).



Plug hole has 2 notches on one side.

**Step 6**

**Step 3**

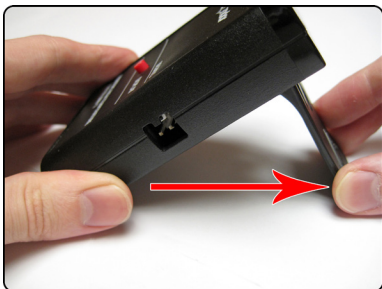


Lift bottom of tab at the (2).

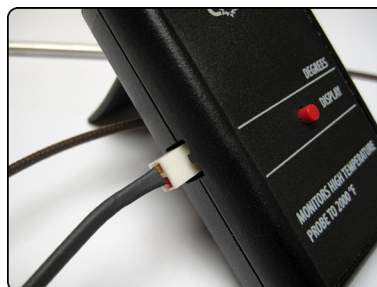


Make sure the probe cable matches!

**Step 4**



Swing bottom of tab out.



Plug in probe on either left side...

**Step 7**

**Step 5**



Stand your Meter up on its own.



... or the right side!