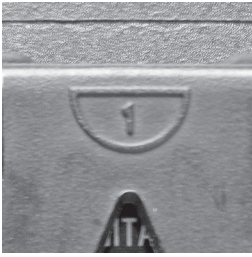


Digital Pyrometer

Model 9-88 Operating Instructions

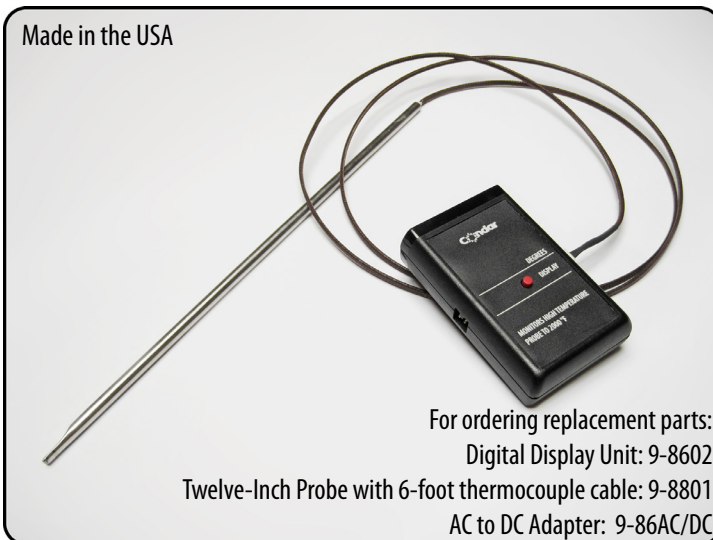


The display unit may be hung on the wall, or stand on a horizontal surface. The built-in stand on the rear of the display unit may be opened to provide an easel-type support. To open, do not use force. **Lift up the center locking tab** (the #1 molded into the top of monitor clip) **while opening the clip** (the #2 molded into the bottom of the monitor clip).



Scroll down to the next page for photographic set up instructions.

- 1 Locate the display unit well away from the heat source as high temperatures could melt the plastic case.
- 2 Install a 9-volt alkaline battery in the battery compartment located on the back of the display OR connect the optional AC adaptor.
- 3 Plug cable into either side of the display unit. Avoid sharp bending of the cable within 6 inches of the white cable connector or steel probe.
- 4 Push and release display button. The unit is now powered up for approximately 5 minutes. During this time the display will read COOL or until the temperature reaches 350F.
- 5 When the temperature at the probe drops below 350F, the display reads COOL. The display changes by 50 degree increments.



IMPORTANT: The steel probe tube is rated to 1950F. At this temperature the stainless steel probe tip will begin to glow and lose its properties, becoming brittle. To order a replacement probe visit:

www.Condar.com/kiln_thermometers_homegarden.html

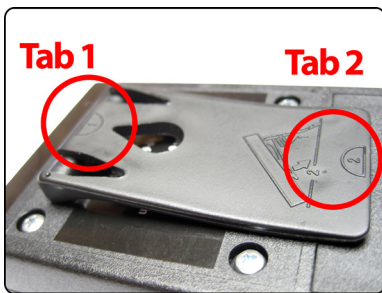
For ordering replacement parts:
Digital Display Unit: 9-8602
Twelve-Inch Probe with 6-foot thermocouple cable: 9-8801
AC to DC Adapter: 9-86AC/DC



Digital Pyrometer Set-Up

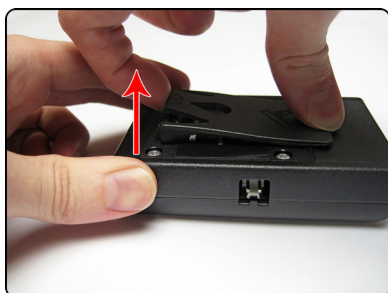
(For Fahrenheit and Celsius Models)

Step 1



Look at backside tab. See (1) and (2).

Step 2



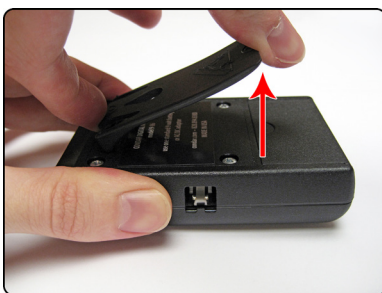
Lift top of tab at the (1).



Plug hole has 2 notches on one side.

Step 6

Step 3

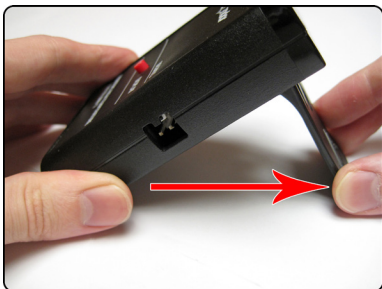


Lift bottom of tab at the (2).

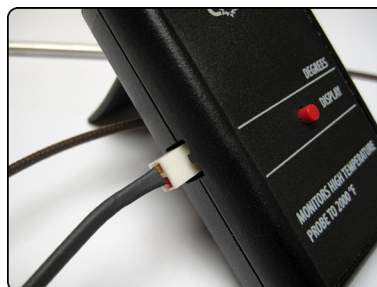


Make sure the probe cable matches!

Step 4



Swing bottom of tab out.



Plug in probe on either left side...

Step 7

Step 5



Stand your Meter up on its own.



... or the right side!